

Sonatest Data Management Software Package

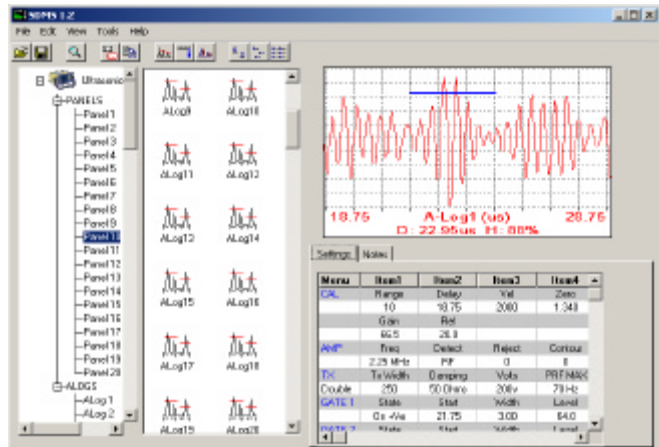
SDMS, is a memory management tool, which enables the user to interface a Sonatest Digital Flaw Detector with a PC.

There are four main elements to the SDMS Package:

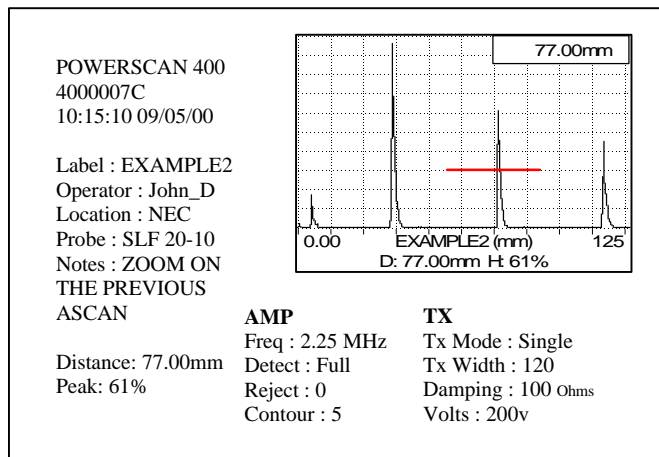
- | | |
|-----------------------------------|-------------------------|
| 1) Main SDMS Application | 2) SDMS Help facility |
| 3) Excel Thickness Logging Add-in | 4) File Conversion Tool |

1. MAIN SDMS APPLICATION

- Drag and Drop operations initiate data transfer between the Flaw Detector and the PC.
- A-Scan and Calibration Copy into Clipboard.
- Editable Notes section
- Control privilege memory access from SDMS (SS140, 240 and MS 340 Only)
- Currently Available in English, French and Spanish.



- SDMS provides the user with copy to clipboard abilities. This enables the user to produce their own reports using their preferred software packages.
- A final feature of SDMS is the consistency in memory locations and parameter values, which improves stability and flexibility of the software.

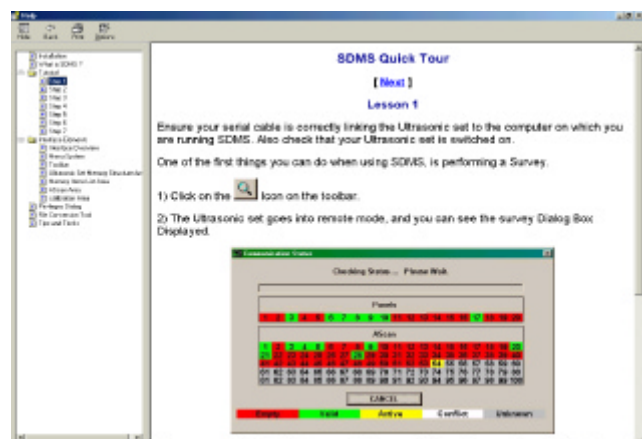


Report Format

2. SDMS HELP FACILITY

Includes:

- Basic Introduction to SDMS
- Contains a seven step tutorial programme.
- A tour of the various Interface Elements
- Tips & Tricks



3. EXCEL THICKNESS LOGGING ADD - IN

All Sonatest DFDs have the capability to perform Thickness logging, holding up to 2000 data entries. This capability can now be utilised to it's full potential with SDMS and the Excel Spreadsheet Add-In.

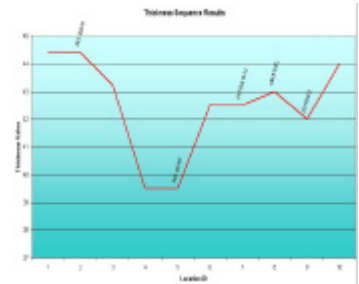
The Add-in has two modes:

SEQUENCE MODE

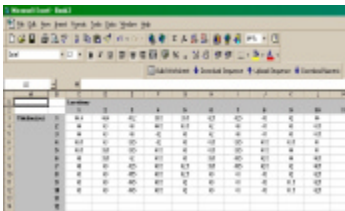
- This mode is used to upload labels and download sequence thickness readings from the ultrasonic set.
- Labels are used to indicate the order of locations to test.
- While taking measurements, the operator has the ability to add notes. These notes can be downloaded back into the spreadsheet, along with the unit of measurement.



Display of Labels on DFD

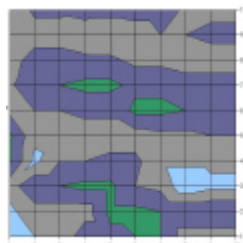


Example output in Sequence Mode



Location	Thickness (mm)	Notes
1	14.5	
2	14.5	
3	14.5	
4	14.5	
5	14.5	
6	14.5	
7	14.5	
8	14.5	
9	14.5	
10	14.5	

Excel Spreadsheet with thickness readings



Surface Plot output

NUMERIC MODE

- The Numeric mode is compatible with the full range of Sonatest Digital Flaw Detectors.
- It is used to download ONLY from the ultrasonic sets in block, location, thickness, ID formats.

4. FILE CONVERSION TOOL

- This file conversion tool will only be of interest to those users currently running WinDFD 1.x.
- The aim of this feature of SDMS is to convert old files into the new SDMS file format
- Easy to use and supported by SDMS Help facility.

HARDWARE & SOFTWARE REQUIREMENTS

Basic Requirements

- One available Serial Port on PC.
- Intel PC Based Computer (Pentium class or above).
- Windows 95/98(SP1)/2000 or NT4.

- Serial Cable
- 64 MB RAM

Recommended.

- 3 MB of Free Disk Space.
- Internet Explorer 4 & above or Netscape 4.x.
- Microsoft Office 97 or higher.

- CD ROM Drive.



For further information contact:
Sonatest Plc
Dickens Road, Old Wolverton, Milton Keynes, MK12 5QQ, England
Tel: +44 (0)1908 316345 Fax: +44 (0)1908 321323
E-mail: sales@sonatest-plc.com
Web: <http://www.sonatest-plc.com>

